



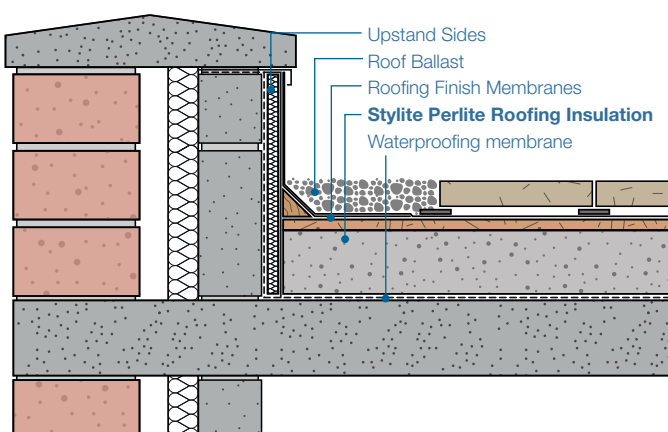
Stylite Perlite Insulation Board

- **Lambda from 0.030 W/mK**
- **Resists heavy foot traffic**
- **Bituminous, PVC & Asphalt compatible**
- **No reduction in performance over time**
- **Quick & easy install**
- **Lightweight**
- **Minimal water absorption & permeability**
- **Achieves BRE Green Guide A+**
- **100% recyclable**
- **No HFC's, CFC's or HCFC's**



Stylite Perlite Roofing insulation board is Stylite expanded polystyrene insulation bonded to a perlite insulation board. Available in a plain board, bitumen covered board or tapered. The high density and fire resistant board can be used for both refurbishment & new build. Compatible with any new waterproofing layer.

Typical Perlite Insulation Boards - Ballast / Green Roof



Perlite Board Overview

Perlite Insulation boards are made from expanded perlite, binders, and fibres, originally perlite started the process as volcanic ash. From the natural origins of perlite, it is resistant to fire and water providing superior insulation properties. Perlite boards are independently tested and approved for use in the UK by the BBA.

Compatibility

EPS is compatible with cement, concrete, brick, masonry, mortars, plaster and membranes. It must not be used in contact with other building materials containing solvents, However the perlite bitumen bonded overlay can accept solvent based materials.

Durability

EPS is rot proof and durable, and will remain an effective insulation for the life of the construction.

Environmental Safety

EPS is not affected by bacteria, moulds or fungi, and will not provide nutrient value for insects or vermin. It is non-toxic, non-irritant and odourless. It does not contain CFC's or HCFC's. EPS has a Global Warming Potential (GWP) of zero and an Ozone Depletion Potential (ODP) of zero.

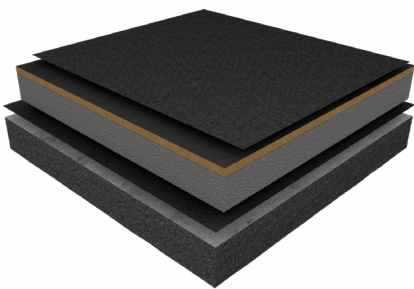
Reaction To Fire Classification

Stylite will achieve reaction to fire Euroclass F. However, this can be approved by the addition of the perlite fire rated board. Classification achieved when installed in a build will be considerably better. We also supply an FRA grade which contains PolyFR and achieves reaction to fire Euroclass E.

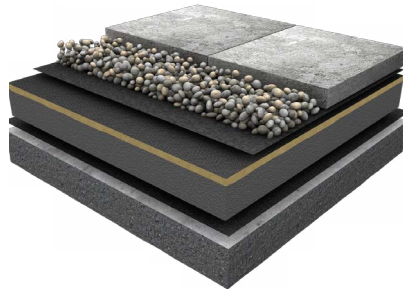
Stylite Perlite Bonded Roofing Insulation Coverings

Due to the perlite overlay bonded board, its fire rating and compressive properties these boards are compatible with most roof coverings from filtration layer ballast to bituminous or mastic asphalt. Stylite expanded polystyrene is susceptible to solvents, with the added perlite layer you

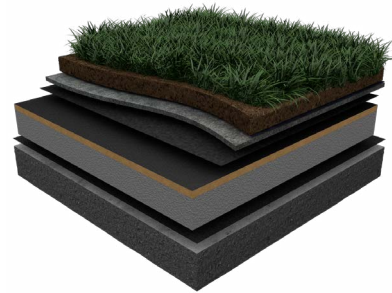
can use solvent based overlays. Suitable for all types of building, roof accessibility, under all waterproofing systems: mechanically fastened, fully bonded or torch applied. For more information call our sales team on 01274 691777 or visit our website. www.styrene.biz



Fully bonded - Ideal for use with single ply / felt finishes, for extensive maintenance only roofing.



Ballasted - Ballasted layers can be used too create extensive / semi-intensive roofing.

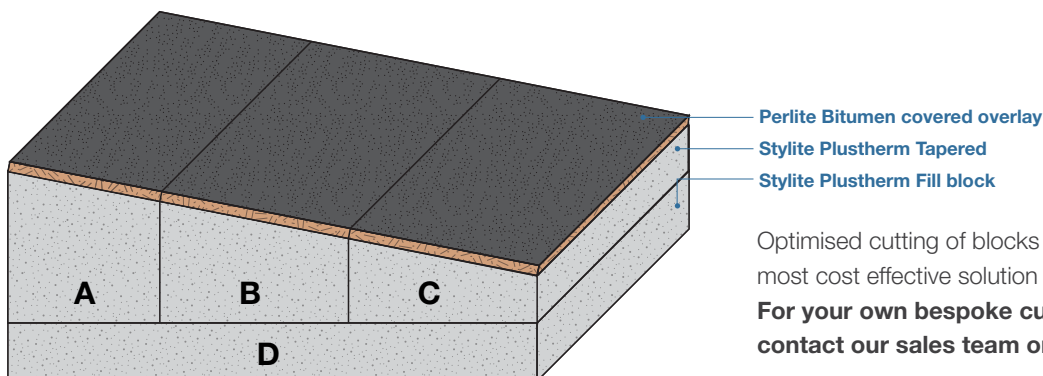
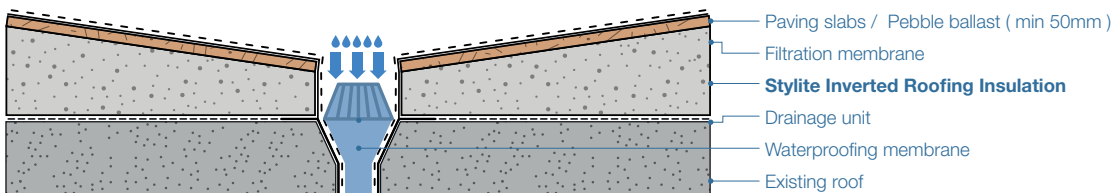


Green Roof - Stylite Inverted flat roofing can be used for green roofing from extensive to intensive roofing.

Stylite Perlite Bonded Roofing Insulation Tapered

Stylite expanded polystyrene is easily cut to form a tapered slope of a roof, this can be custom designed to your requirements and dimensions. Offering a Perlite bonded tapered board allows you to control the water drainage of your roofing system whether new build or refurbishment to ensure zero chance of standing water.

The flooding aspects of a flat roof require that anything above 2% slope has specialist requirements to negate standing water, anything below 2% requires your typical drainage systems. **For a specific build design contact our technical and sales teams on 01274 691 777.**



Optimised cutting of blocks to ensure the most cost effective solution minimising waste. **For your own bespoke cut-to-fall design contact our sales team on 01274 691777.**

Stylite Perlite Bonded Roofing Insulation Reaction to Fire

With the addition of the perlite board, fire performance of the EPS is enhanced and this permits the use of hot applied roof coverings. **For more details about the use**

of EPS and perlite roofing contact our sales and technical team on 01274 691 777.

Material	Classification (according to EN 13501-1)	Description
Plustherm	E	The products are capable of withstanding (for a short period of time) a small flame without resulting in any substantial spread of the flame
Perlite	C-s1, d0	The products are capable of withstanding (for a longer period of time) a small flame without resulting in any substantial spread of the flame. They are also capable of withstanding the attack of a single release. Restrictions to the amount of smoke produced and no flaming droplets or particles are produced.

Stylite Perlite Bonded Roofing Insulation Typical U-Values

Stylite perlite bonded roofing boards are perfect for use with many different types of roof coverings from single ply to green roof gardens. Each roof type is intended for different levels of use and due to the wide range of compressive grades, you can always find a board of

EPS that will suit your thermal and compressive load requirements. The minimum thickness of ballast is 50mm upwards. **For more details about the use of EPS in flat roofing contact our sales and technical team on 01274 691 777.**

Flat Roof Warm Deck - Plustherm Perlite bonded boards

Grade	U-value W/m ² K / Thickness mm	
	0.11 W/m ² K	0.18 W/m ² K
Plustherm Perlite Bonded Board	230mm	140mm

Build up calculated to : Plasterboard .210", unventilated Joists .16", OSB Deck .13", Stylite Plustherm Perlite bonded board .034", EPDM .25". Correction value 1. λ

Technical Specification

Features	Plustherm	Perlite Board	Standard
Thermal Conductivity (λ _{90/90})(Wm ⁻¹ K ⁻¹)	0.030	0.050	EN 13163 / EN 13169
Length Tolerance	L1	N/A	EN 822
Width Tolerance	W1	N/A	EN 822
Thickness Tolerance	T1	N/A	EN 823
Planarity Tolerance	P2	N/A	EN 825
Squareness	S1	N/A	EN 824
Bending Strength (kPa)	150	N/A	EN 12089
Reaction to Fire	E	C-s1.d0	EN 13501-1
Water Absorption (mg Pa ⁻¹ h ⁻¹ m ⁻¹)	0.009 - 0.020	<0.07	EN 13163 / EN 13169
Dimensional Stability	DS (N) 5	<0.5 / 1.0	EN 1603 / EN 1604
Compressive Strength @ 10% (kPa)	100	<300 (av.450)	EN 826
Compressive Strength @ 1 % (kPa)	30	N/A	EN 13163
BRE Rating	A+	N/A	BRE
Element No.	1315320016	N/A	BRE

Typical Dimensions	Length mm	Width mm	Thickness mm	Profile
Stylite Inverted Flat Roof Boards	600	1200	20 < 300	Plain edge

EN 13163 : 2012 | BS EN 13501 : 1 : 2007 | BS EN 1603 : 2013 | BS EN 12089 : 2013

Classification code : Pr_25_71_63_26

Recycling

Styrene Packaging & Insulation Ltd provide a completely free scrap EPS pick-up to help us recycle as much polystyrene as possible back into suitable products, please download a copy of our recycling policy to find out how to get involved.

Certification

SPI have real pride in the products we supply. We surpass all current regulations and provide in-dependant certification that ensures a quality product. For full details of our certifications please visit our website at www.Styrene.biz



01274 691 777 
sales@styrene.biz 